

SPRING 2023

THEAM TECH

Line up your Custom Installations NOW

Light Compact Fingertip Control
Highlighting the THEAM Radio

HANDS DOWN- the BEST Radio Controls out there.

Easiest to Use. Best on-the-job results. Worn clipped into a Utility Belt, the operator masters fingertip control of all conveyor and mixer functions while his eyes address the job site not a joy stick.

UNIQUE FEATURES

BELT RUN/STOP

Toggle UP once to start, once to stop. Will resume at the previously set speed.

MIXER RUN/STOP

Toggle DOWN once to start, once to stop. Will resume at the previously set speed.

BELT SPEED

With the belt running, you can vary the speed according to the load and need at belt end. (telescopic only)



Rapid Radio Repair

You like your radio, we understand. If there is an issue, give us a quick call. We may be able to help. If service is deemed necessary, our Rapid Radio Repair Program shoots for a 3 day on-the-bench turn around. **Need a Loaner Radio?** We can get one to you while your radio is being serviced. We also use our Loaner Radios as a trouble shooting tool when we want to determine if the problem is the radio or the truck. We'll have our customers plug in the loaner radio ahead of sending theirs out for service.



Radio Pro Tips

TIP: Eliminating “Dead Zones”

We carefully positioned the antenna during installation to avoid “Dead Zones” and maximize coverage. If coverage diminishes, make sure the antenna is properly positioned. Antenna should be positioned “vertically”, in an either UP or DOWN position. Never put the antenna close to a vertical steel wall (the truck cab for example). Otherwise, distance and dead spots are resolved by “T’ing” a second antenna to the first, often from cab to back of the mixer or the hand rail on top of the mixer.



TIP: Avoid Unintended “Discharge”

Ready to reposition truck with conveyor extended? BEFORE you do, PUT RADIO IN “CHARGE” on your hand held. If you leave Mixer in “NEUTRAL” or “DISCHARGE”, it will start up in “DISCHARGE” which might catch you off guard.



TIP: Avoid Running Down Your Battery

So you finished your pour and are ready to turn off the PTO. Think to put RADIO in “CHARGE” AND TURN RADIO

“OFF”. *If you don’t turn hand held power “OFF”, when you go to your next job, the little 9V battery will be flat.



TIP: Loose Antenna Falls Off. If your antenna gets loose and falls, it is usually easy to find... but not so much the gasket. Stock kit #60602FK to avoid an antenna purchase.



TIP: Quick Check Your Battery. Hand Held not working? Always check the 9V battery. Take it out and stick it on your tongue. A little zip, it’s good, *nothing*... it’s dead. Always carry a box of spare 9V batteries in the cab.



Prep For Your Busy Season

TIP: Maintenance? Perform a thorough walk-around inspection of your equipment. Talk over any maintenance project you anticipate with our Tech Desk and order all the parts you *might* need. Anything not used can be returned for *full credit*.

Remember to inspect your safety decals and order any that need replacing!

TIP: If you stock an extra PTO, make sure it is labeled for the correct **THEAM** conveyor model.

TIP: How to Fix a Drifting Section. Disconnect the check valves, take cartridge apart. Clean the manifold and cartridge with brake cleaner, pressure air dry and re-oil. Swap left to right. This generally solves the problem. As always, CALL ANYTIME.



We Want YOU!

Be in our 2024 parade of THEAM conveyors calendar!

Send your BEST SHOTS to Stephanie@theamconveyors.com or message Lolly (207) 841-3582.

PARTS & SERVICE

WE HAVE THE PARTS.

WE HAVE THE ANSWERS.

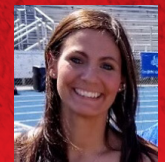
WE'RE HERE TO KEEP YOU ON THE ROAD AND MAKING MONEY!



Keith, Tech Desk



Clair, Parts Desk



Steph, Logistics

**BULLET
PROOF**



THEAM[®]
mixer-mounted conveyors

800-635-6729 www.theamconveyors.com