

2025 Jumping In!

SPRING MAINTENANCE

Weight load restrictions will be lifted soon. If you haven't done your preventative maintenance or you are new at it, here's your checklist.

☐ **Safety Zone Check:**

Prevention Pays - You have the Tools.

- Keep pressure gauges in functioning order
- Keep warning indicator **LIGHTS** and **AUDIO** alarms in functioning order

• In CAB - PTO "ON" Alarm - *working?*

X

X

• In CAB - "Transit Lock Failure" Alarm - *working?*

X

• In CAB - "Outrigger Down" Alarm - *working?*

X

X

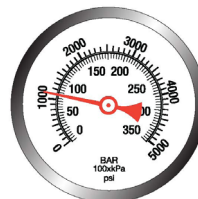
• In CAB - "Accidental Discharge" Alarm - *working?*

X

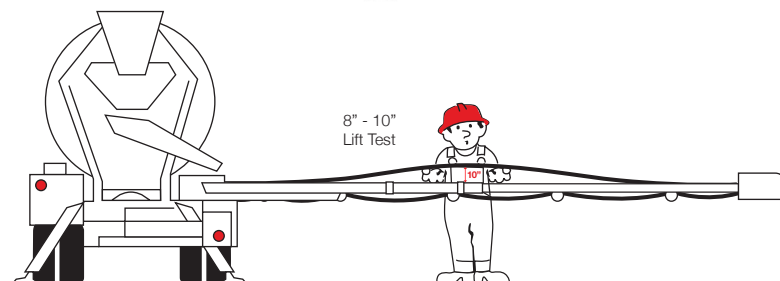
THEAM supplied mixer-controls only

☐ **Hydraulic Gauge Check: Know Your THEAM Hydraulic Basics**

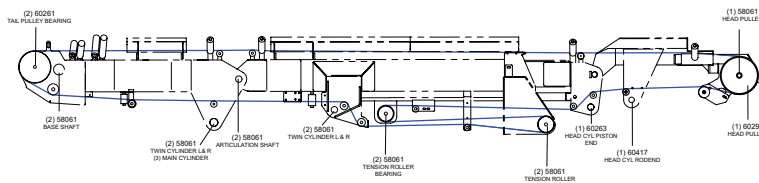
- Belt running empty at **MAX SPEED**, gauge should read **1000 PSI**
- PTO engaged but **NO LOAD**, gauge should read **300 PSI**
- PTO engaged at **MAX PRESSURE**, gauge should read **3000 PSI**


☐ **Get the Belt Tension right:**

- Start with the 8" lift test.
- Discover root cause if you fail the lift test.
- TOO TIGHT a belt STEALS PLACING POWER.


☐ **Hit those grease points:**

- Ask for our Grease Points Guide for your boom, pivot and drive line
- Specify Standard or Telescopic


☐ **Check belt for small knicks and cuts:**

- Attend to them early using our pylic repair

☐ **All together now...**

What oil should you be using?

- Check that there is no intrusion of water but change 1 X year systematically or more if over average 6,000 yards/yr.

CAUTION
AVOID PUMP FAILURE

USE ONLY
ISO 68 OIL

for your **THEAM** conveyor

THEAM conveyors
THINK SAFETY

57580



☐ **Electrics Tip: Humidity Control Test**

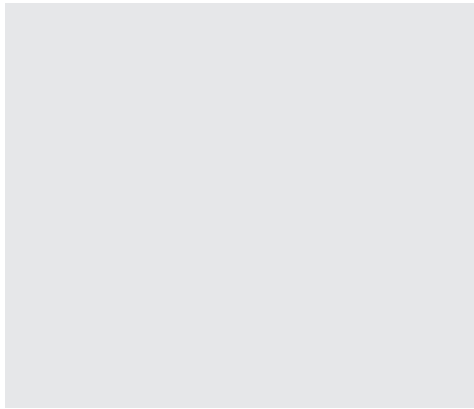
- Over time condensation might migrate to your electric box where the emergency Kill Switch is located. As a preventative measure, it is easy to open the box and look at the two plastic switches and eventually replace.

☐ **SPD 200IA: Needs to be programmed**

- SPD (Over Speed Control), required on your TL conveyors, now needs to be programmed prior to engaging PTO. We program as part of a new installation but if you pick up a used TL unit, make sure your pump and PTO are protected by a SPD. It will kick out pump if RPMs too high.

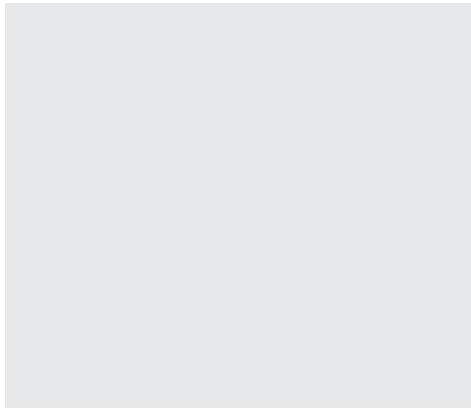
SAFETY ZONE

Outrigger Pads: Use Them



Standard Conveyors: Eliminating bottom roller #58417

Located in the middle of the third frame, we have determined that #58417 is not necessary and is a pinch point that can be eliminated. We suggest you move this roller. Call for more info or if you have a question or seek an explanation.



PTO Lock Out: New Feature

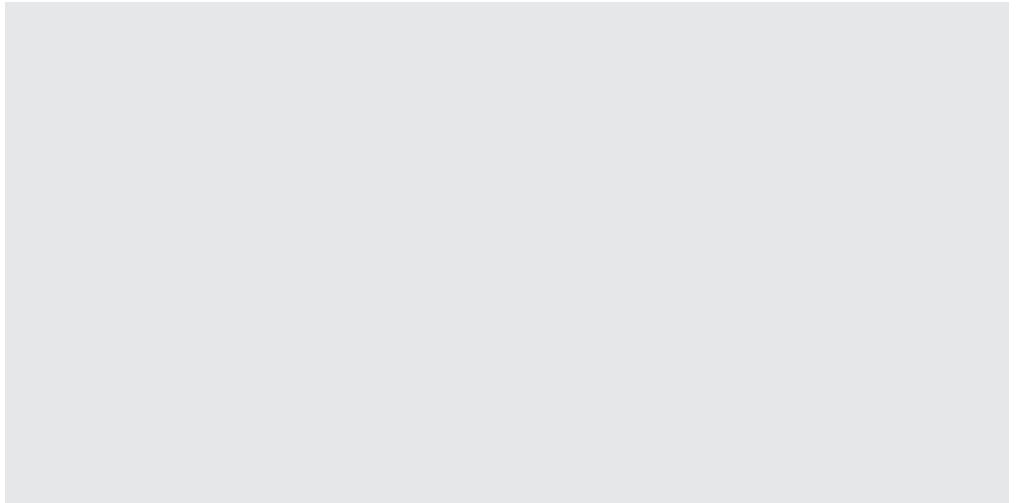
This adds a level of control and convenience for the operator. PTO Lock out is a Key on a general fuse that when removed locks PTO but allows truck to run. When any verification or maintenance is required, operator/mechanic can be assured belt not operable.



PRO TIP

Truck goes down during a conveyor pour – what to do?

If you have a second conveyor, dispatch to the site, bypass the original PTO and using the hydraulics of rescue unit, finish the pour and fold conveyor number one back to transit position.



TECH AND PART SERVICE



Clair, Parts Desk



Keith, Tech Desk

Call us. Put our 44 years of experience to work for you. Tamping down freight inflation, too. We ship everything on our negotiated discount rates.



800-635-6729 www.theamconveyors.com